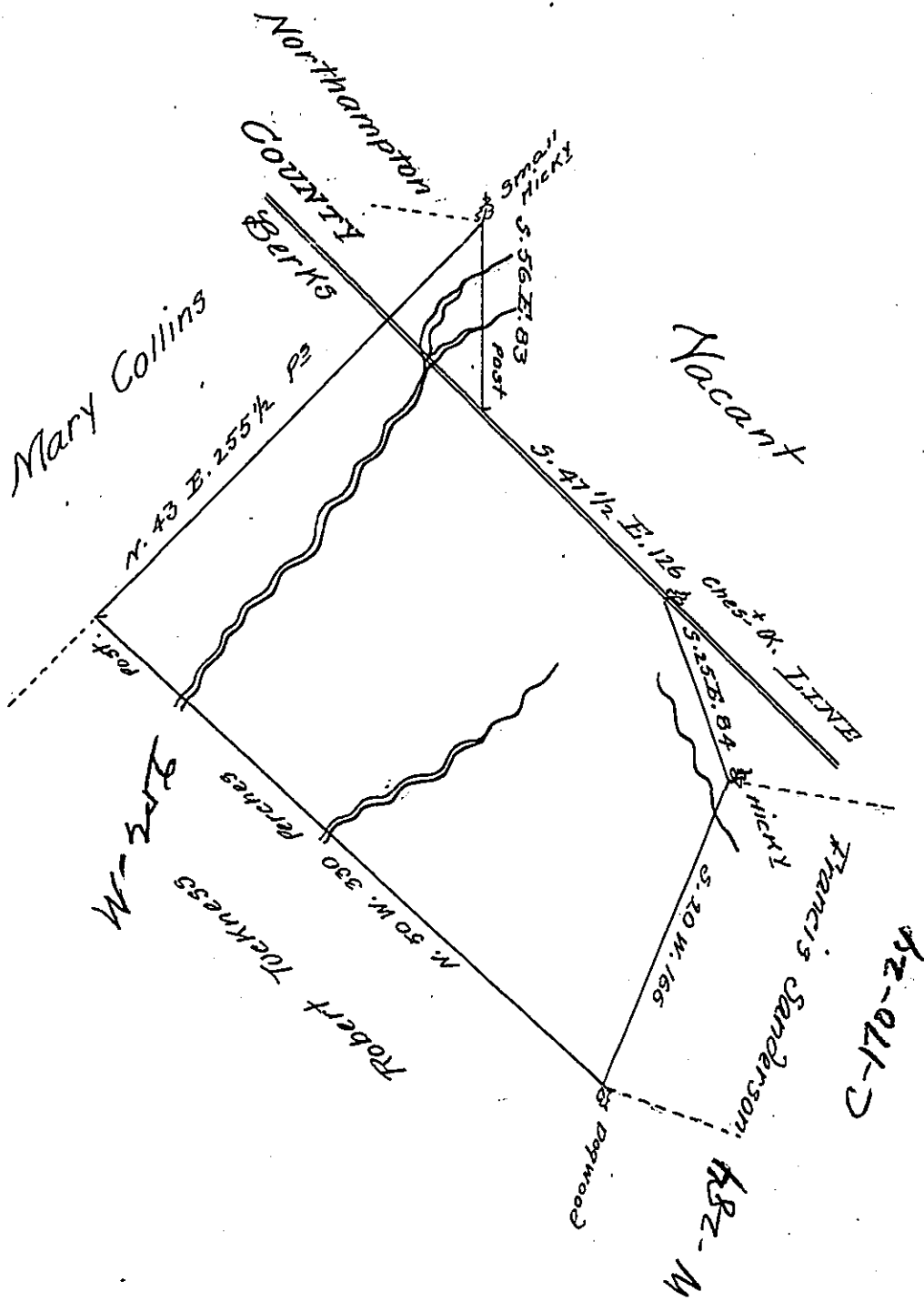


FORM NO 1.



By virtue of an Application dated the third Day of April 1769 No 904  
 Surveyed the third Day of July 1771 unto Zebulon Rudolph the above descri-  
 bed Tract of Land situate on the head Branches of Chillisquaque Creek, <sup>partly</sup> in  
 the County of Northampton Chiefly in the County of Berks, containing  
 three hundred thirty four Acres & a half & allowance of Six P. Ct

P. Wm Scull. -

IN TESTIMONY that the above is a copy of the original remaining on file in  
 the Department of Internal Affairs of Pennsylvania, made  
 conformably to an Act of Assembly approved the 16th day of  
 February, 1833, I have hereunto set my Hand and caused  
 the Seal of said Department to be affixed at Harrisburg,  
 this Seventh day of February 1907

*Geo. R. Brown*  
 Secretary of Internal Affairs.